

PLEASANT VALLEY PARK

2557 Pleasant Valley Road
Murrysville PA 15668

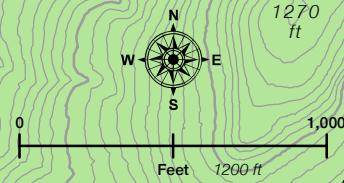
A Municipality of Murrysville Park

262 acres

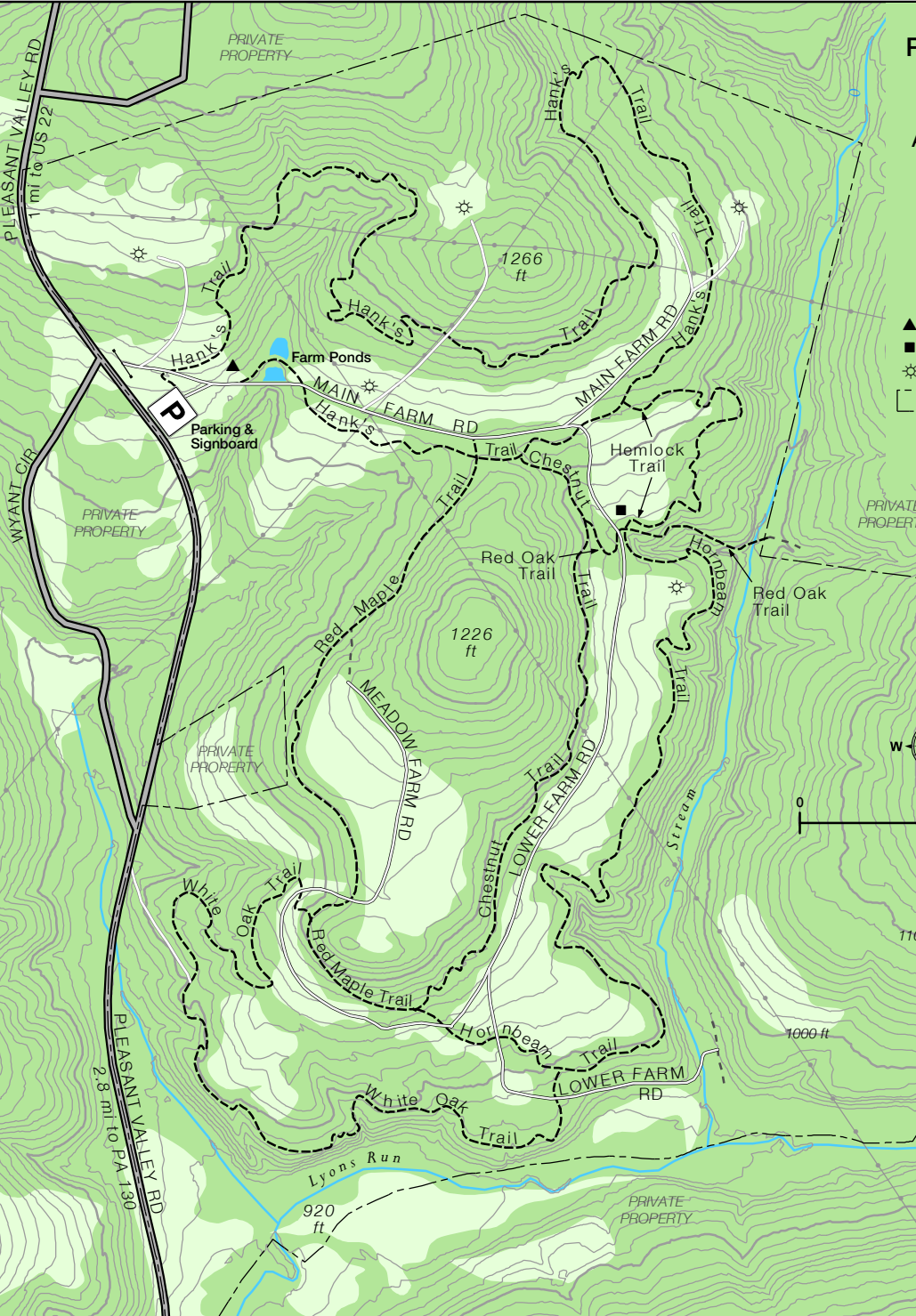
Lat: 40.410351 N, 79.689406 W

Map prepared February 2012

- ▲ Old Springhouse
- Watering Trough
- ☼ Gas Well
- ▭ Park Boundary
- Single Track Trail
- Farm Road
- Old Roadway
- - - - - Unauthorized Trail
- Gas Line
- ▭ Fields



Contour interval = 10 feet
 Map prepared by mousemapper@gmail.com
 for the Murrysville Trail Alliance



Chestnut Trail	0.48 mi	Forested trail along hillside with some partial views of meadow below
Hank's Trail	1.67 mi	Loop trail through varied forest, with many turns and short climbs
Hemlock Trail	0.3 mi	Forest trail along edge of meadow and deepening ravine
Hornbeam Trail	0.86 mi	Passes in and out of woods; some segments in forest skirt beautiful ravines
Red Maple Trail	0.55 mi	Forest trail along hillside under high canopy, with longer stretches and views
Red Oak Trail	0.15 mi	Descending spur through forest, much along ravine to stream
White Oak Trail	0.80 mi	Forest loop with gentle climbs and turns; parts overlook steep slopes
Main Farm Rd	0.47 mi	Main roadway along meadows and treelines
Lower Farm Rd	1.10 mi	Mowed roadway descending along meadows to a valley stream
Meadow Farm Rd	0.68 mi	Farm road crossing many trails and high meadow of park

Note: Use of unauthorized trails, which may lead to private property, is discouraged.



Celebrating Outdoor Murrysville

www.MurrysvilleTrails.org

