

# PLEASANT VALLEY PARK

2557 Pleasant Valley Road  
Murrysville PA 15668

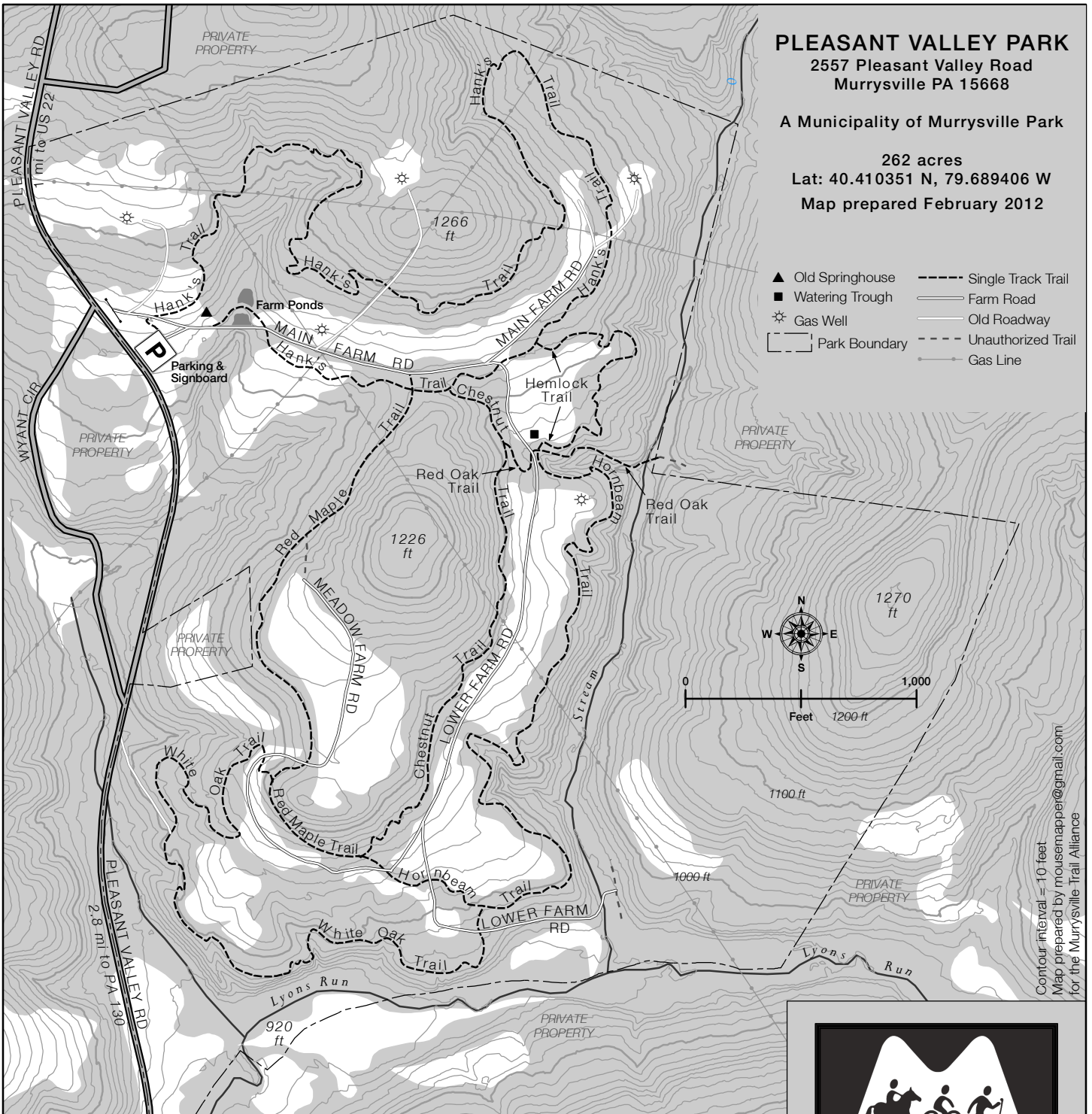
A Municipality of Murrysville Park

262 acres

Lat: 40.410351 N, 79.689406 W

Map prepared February 2012

- ▲ Old Springhouse
- Watering Trough
- ☼ Gas Well
- ▭ Park Boundary
- Single Track Trail
- ===== Farm Road
- Old Roadway
- Unauthorized Trail
- Gas Line



Contour interval = 10 feet  
 Map prepared by mousemapper@gmail.com  
 for the Murrysville Trail Alliance

|                 |         |  |
|-----------------|---------|--|
| Chestnut Trail  | 0.48 mi | Forested trail along hillside with some partial views of meadow below          |
| Hank's Trail    | 1.67 mi | Loop trail through varied forest, with many turns and short climbs             |
| Hemlock Trail   | 0.3 mi  | Forest trail along edge of meadow and deepening ravine                         |
| Hornbeam Trail  | 0.86 mi | Passes in and out of woods; some segments in forest skirt beautiful ravines    |
| Red Maple Trail | 0.55 mi | Forest trail along hillside under high canopy, with longer stretches and views |
| Red Oak Trail   | 0.15 mi | Descending spur through forest, much along ravine to stream                    |
| White Oak Trail | 0.80 mi | Forest loop with gentle climbs and turns; parts overlook steep slopes          |
| Main Farm Rd    | 0.47 mi | Main roadway along meadows and treelines                                       |
| Lower Farm Rd   | 1.10 mi | Mowed roadway descending along meadows to a valley stream                      |
| Meadow Farm Rd  | 0.68 mi | Farm road crossing many trails and high meadow of park                         |

*Note: Use of unauthorized trails, which may lead to private property, is discouraged.*



Celebrating Outdoor Murrysville

[www.MurrysvilleTrails.org](http://www.MurrysvilleTrails.org)

